

Recent Research Featured Discussions

Chapare Virus, a Newly Discovered Arenavirus Isolated from a Fatal Hemorrhagic Fever Case in Bolivia

DC-SIGN and CD150 Have Distinct Roles in Transmission of Measles Virus from Dendritic Cells to T-Lymphocytes

***Histoplasma* Requires *SID1*, a Member of an Iron-Regulated Siderophore Gene Cluster, for Host Colonization**

Molecular and Cellular Basis of Microvascular Perfusion Deficits Induced by *Clostridium perfringens* and *Clostridium septicum*

Stimulation of Chitin Synthesis Rescues *Candida albicans* from Echinocandins

[Browse all recently published articles](#)

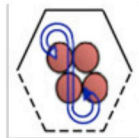
Publish with PLoS

We want to publish your work
Have Your Say

Add ratings and discussions

Featured Review

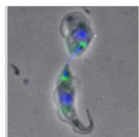
The Lentiviral Integrase Binding Protein LEDGF/p75 and HIV-1 Replication



Engelman and Cherepanov conclude that compounds that inhibit the protein-protein interaction during HIV-1 integration may eventually be combined with active site inhibitors to increase the breadth of antiviral drugs designed to block this integration step and therefore thwart viral replication.

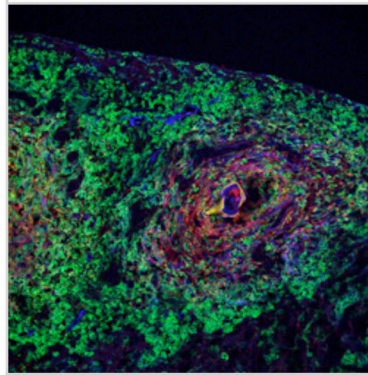
Featured Research

Identification of a Bacterial-Like HslVU Protease in the Mitochondria of *Trypanosoma brucei* and Its Role in Mitochondrial DNA Replication



Li et al characterize a mitochondrial HslVU protease in the mitochondrion of *Trypanosoma brucei*. The group further shows that this protease plays a role in the replication of the kinetoplast DNA.

March 2008 Issue



PLOS Pathogens is an open-access journal that publishes important new ideas on bacteria, fungi, parasites, prions, and viruses that contribute to our understanding of the biology of pathogens and pathogen-host interactions.



NPR's Science

Friday

Listen to the podcast of the Harold Varmus



NIH Public Access

Policy is now in effect



PLoS Facebook

Group

Welcome to our 1000th member K.T. Vaughan

Stay Connected

E-mail Alerts

Sign up for alerts by e-mail

RSS ([What is RSS?](#))

Subscribe to content feed

Join PLoS

Support the open-access movement!



PLOS
PUBLIC LIBRARY
of SCIENCE

An
OPEN ACCESS
home for all
peer-reviewed
research

- Reusable without permission
- Authors own copyright
- Maximum citation impact
- Widespread media coverage
- Unrestricted online access forever



OPEN ACCESS